

- 2/2-way isolation valve
- Bidirectional and minimal dead volume
- Very small and compact design
- Low power consumption



TECHNICAL DATA

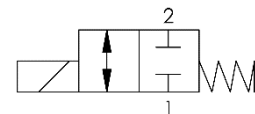
Function	2/2 NC
Pneumatic connection	1/4-28 UNF
Orifice size	1.6 mm
Weight	90 g
Mounting position	any
Operating pressure	-1 – 2 bar(g)
Flow rate with air @ max. pressure	16 l/min
Flow coefficient kv	max 0.4 l/min
Temperature range, environment	-29 – 70 °C
Temperature range, medium	-29 – 70 °C
Temperature range, storage	-29 – 70 °C
Internal tightness	< 0,2 ml/min
External tightness	< 0,2 ml/min
Media	Air, gases, and water, others on request ¹



ELECTRICAL DATA

Electrical connection	Flying leads
Length electrical connection	450 mm
Nominal voltage	12 V DC
Nominal power consumption	1.6 W
Permitted Duty cycle (no flow)	33 %

PNEUMATIC SYMBOL

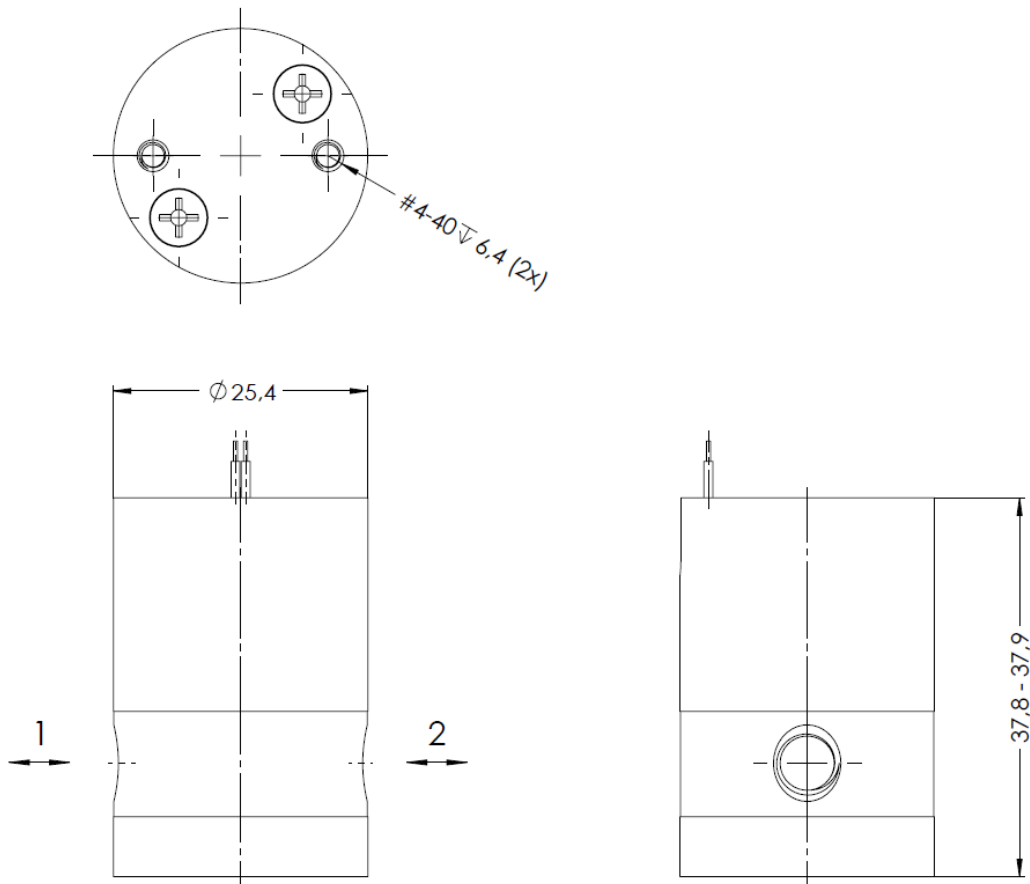


WETTED MATERIALS

Housing	PTFE
Seal diaphragm	PTFE

¹ Due to the use of resistant materials, the valve is suitable for many other media (including liquids) after prior testing. Please contact us for more information.

VALVE DIMENSIONS



The technical information given describes the usual properties of our products and does not constitute a warranty statement. All values were determined under laboratory conditions and must be verified by the customer for his specific purpose. Due to continuous technical progress, all rights to changes and additions are reserved.
Status: 2026-04-02