

RTP

ROTARY TRANSFER PUMP

The complete solution for your
hygienic tanker system.



wright flow
TECHNOLOGIES®

RTP

The complete solution for your hygienic tanker system.

Designed specifically for the **hygienic stainless steel** road tanker industry, the RTP **outperforms the competition** by providing higher capacity, higher pressure and unmatched efficiency. The RTP can also **reduce loading and unloading time by over 30%**.

This increased performance, along with **advanced durability, application flexibility, ease of installation and ease of maintenance** provide a complete solution for your hygienic tanker needs.

WHY CHOOSE THE RTP?

YOUR NEEDS	WRIGHT FLOW RTP	WRIGHT FLOW RTPe	COMPETITOR
FDA compliant (GRAS) & 3A Certified	✓	✗	✓
Dry-Run Capable Seal*	✓	✓	✗
Reduces loading and unloading time by over 30%	✓	✗	✗
Ingress Protected & Sealed Maintenance-Free Gearbox	✓	✓	✗
Pump design reduces overhung load, vibration, and pipe stress.	✓	✓	✗
Smallest footprint and lowest weight	✓	✓	✗
Solids Handling	✓	✓	✓
All 316L Stainless Steel Wet End	✓	✓	✓
Multiple Port Options	✓	✗	✓
4-Way Mounting Feet	✓	✗	✗

✓ Yes ✗ No/Not Ideal or Limitations

* consult with Wright Flow Representative for details

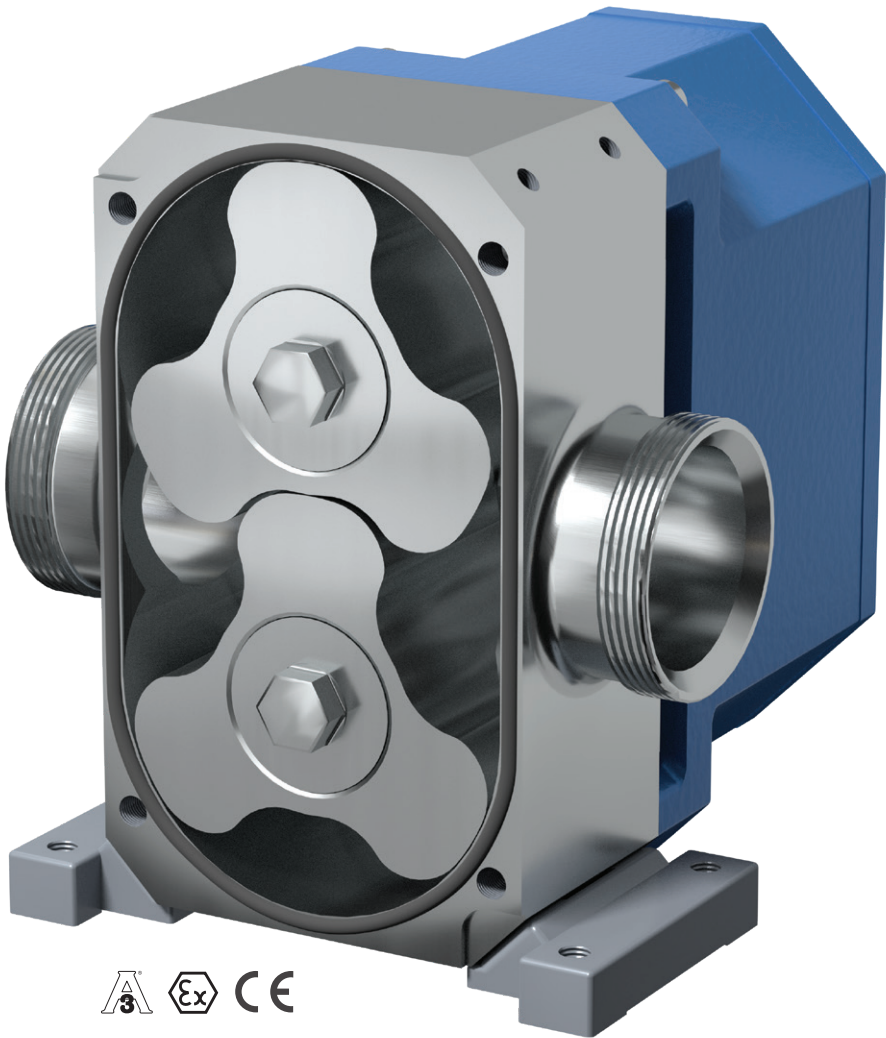


FEATURES & OPTIONS

- 316L stainless steel pump casing and rotors with interior finished to 3-A standards
- Single /double o-ring, dry-run capable composite o-ring seals, or mechanical seals available in a complete range of material options.
- Camlock, ACME & DIN 11851 ports available
- Ingress protected and sealed lightweight aluminum gearbox
- SAE 2 & 4 bolt mounting flange for close coupled hydraulic drive applications
- Optional pressure relief valve to protect pump against excess pressure spikes
- High efficiency rotors for low viscosity fluids

PERFORMANCE

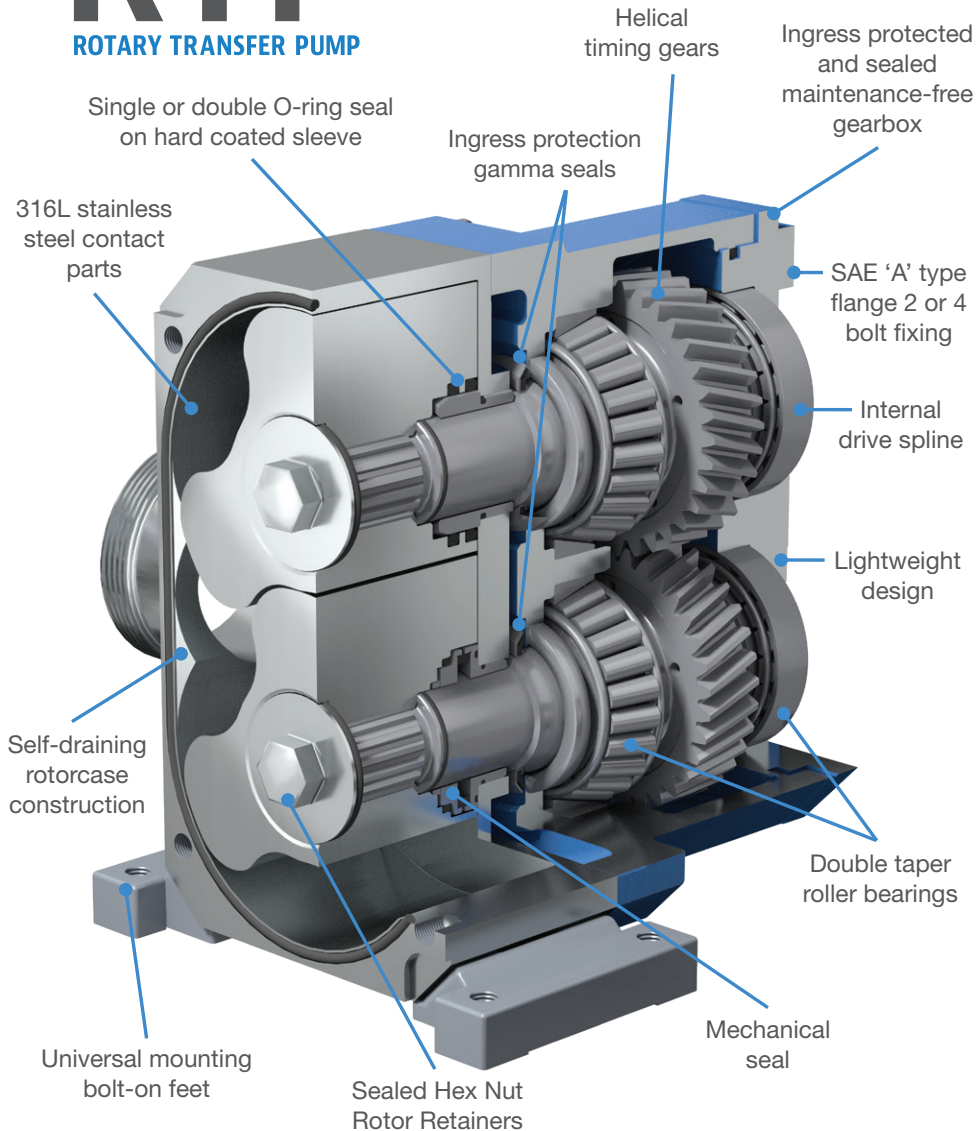
- Easily handles higher viscosity liquids with improved pressure capabilities for faster unloading
- Excellent displacement/weight ratios, meaning more in the tank & less in the cabinet
- Precision helical gears, rotors & shaft design, with optimized bearing position, minimize overhung load – extending seal & bearing life



RTP MODEL	DISPLACEMENT		MAX PRESSURE		MAX SPEED	STANDARD PORTS		MAX CAPACITY		MAX TEMPERATURE		MAX VISCOSITY	
	l/rev.	USG/rev.	BAR	PSI	RPM	mm	in.	m³/hr	USGPM	Deg. C	Deg. F	cSt	SSU
RTP20	1	0.264	10	145	1000	50 or 75	2 or 3	60	264	110	230	200,000	910,000
RTP30	1.28	0.338	12	174	1000	75 or 100	3 or 4	76.8	338	150	300	200,000	910,000

RTP

ROTARY TRANSFER PUMP



CLEANABILITY

- The simple design behind the rotor makes strip cleaning easy and fast
- Choose the cleaning process that fits your needs: COP (Clean Out of Place) or CIP (Clean In Place)

EASE OF MAINTENANCE

- Innovative front loading seal design enables quick inspection and easy servicing
- Sealed gearcase with long-life lubrication eliminates oil inspection and filling
- Easy to service design requires no special tools for disassembly and eliminates need for end clearance adjustments

MAINTENANCE KITS:

- Everything you need in one place
- Reduce frequency of repairs
- Increase service life
- Increase uptime
- Save time and money
- Kits include exploded diagram and parts list
- Seal, bearing and elastomer kits available

LEARN MORE AT: WRIGHTFLOWTECHNOLOGIES.COM/RTP

AMERICAS:

WRIGHT FLOW TECHNOLOGIES, INC.

406 State Street
Cedar Falls, IA 50613 USA
Phone: (319) 268-8013
E-mail: wright.usa@idexcorp.com

EUROPE & ASIA:

WRIGHT FLOW TECHNOLOGIES LTD.

Highfield Industrial Estate
Edison Road Eastbourne
East Sussex, United Kingdom, BN23 6PT
Phone: +44(0) 1323 509211
E-mail: wright.eu@idexcorp.com

FOR MORE INFORMATION, CONTACT YOUR LOCAL AUTHORIZED
WRIGHT FLOW TECHNOLOGIES DISTRIBUTOR AT:

